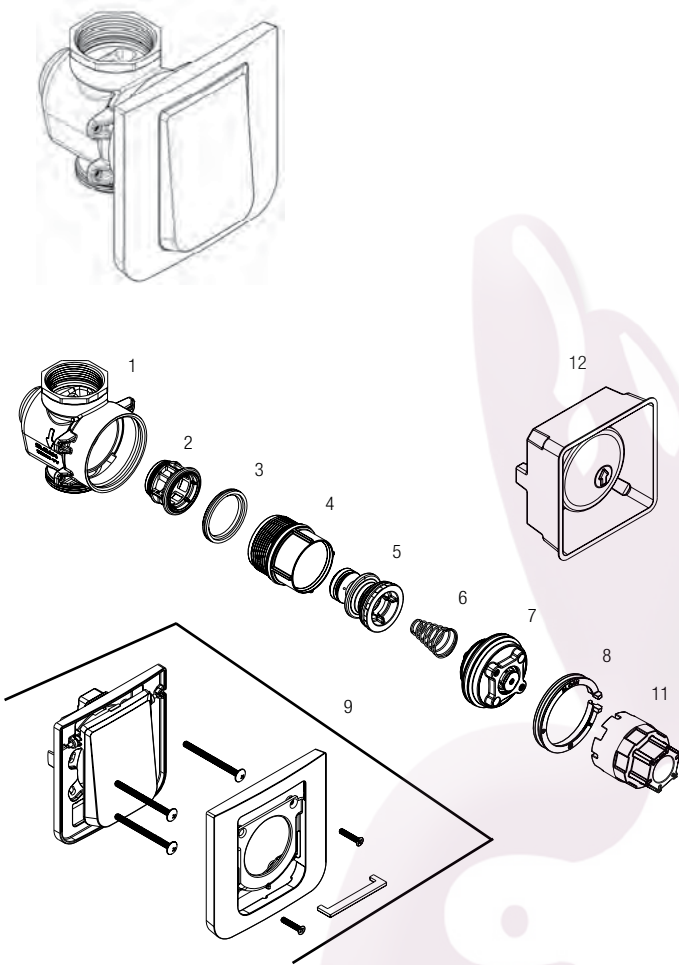


TruFlush Flushometer



PARTS LIST

Item No.	Code No.	Part No.	Description
1.	—	GBL-1	Valve Body
2.	—	GBL-16	Main Seat Retainer
3.	—	GBL-9	Main Seat
4.	—	GBL-66-A	Shut-off Sleeve Assembly
5.	—	See Table	Piston Assembly
6.	—	GBL-69	Conical Spring
7.	—	See Table	Activation Assembly
8.	0340022	GBL-19	Safety Collar
9.	0340038	GBL-36-A	Wall Plate Assembly
10.	0340144	GBL-68	Mud Plate
11.	0340055	GBL-53	Adjusting Tool

Wall plate opening must be minimum of 4" x 4" (102 x 102 mm) to maximum of 5.75 x 5.75"

This valve is designed for new construction or where there is easily accessed plumbing for the fixture and the valve.

Not available in USA or Canada

Piston Parts List Selection Guide

Activation Assembly Selection Guide

Code No.	Part No.	Description	Piston Body Color*	Flow Control Color*	Code No.	Part No.	Description	Solenoid Housing Color*
3340005	GBL-1005-A	1.6 gpf/6.0 Lpf TruFlush closet piston assembly	Green	Green	3340013	GBL-1013-A	1.6 gpf/6.0 Lpf closet activation assembly	Green
3340006	GBL-1006-A	1.28 gpf/4.8 Lpf TruFlush closet piston assembly	Purple	Purple	3340014	GBL-1014-A	1.28 gpf/4.8 Lpf closet activation assembly	Purple
3340007	GBL-1007-A	0.5 gpf/1.9 Lpf TruFlush urinal piston assembly	Red	Red	3340015	GBL-1015-A	0.5 gpf/1.9 Lpf urinal activation assembly	Red
3340008	GBL-1008-A	0.25 gpf/1.0 Lpf TruFlush urinal piston assembly	Burgundy	Burgundy	3340016	GBL-1016-A	0.25 gpf/1.0 Lpf urinal activation assembly	Burgundy

*Colors may differ. Consult factory to confirm you have the correct piston assembly.

*Colors may differ.