

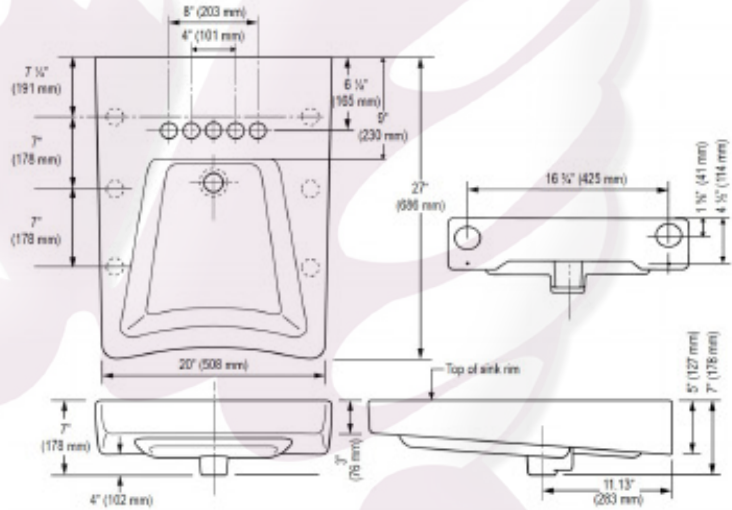
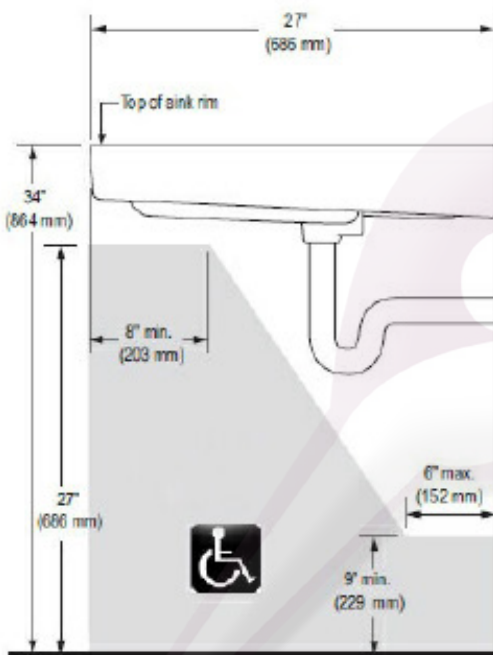
► **Code Number**  
3873104

► **Description**  
Vitreous china wall mounted ADA wheelchair lavatory

- **Lavatory**
- Wall mounted, ledgeback
  - Rear Overflow
  - Single hole
  - Carrier not included
  - 20" (508 mm) x 27" (686 mm)

► **Product Specification**

- Sink shall be made of vitreous china with a rear overflow. Sink shall be wall mounted. Sink shall have a single hole centerset. Sink shall be Sloan Model SS-3104.



All information contained within this document subject to change without notice.

NOTE: All vitreous china dimensions shown in these drawings are nominal and not to scale. Dimensions can vary within the tolerances established in the governing ASME A112.19.2/CSA B45.1 standard. It is important to consider this when planning rough-in and plumbing layouts.

► **Compliance & Certifications**



This space for Architect/Engineer Approval