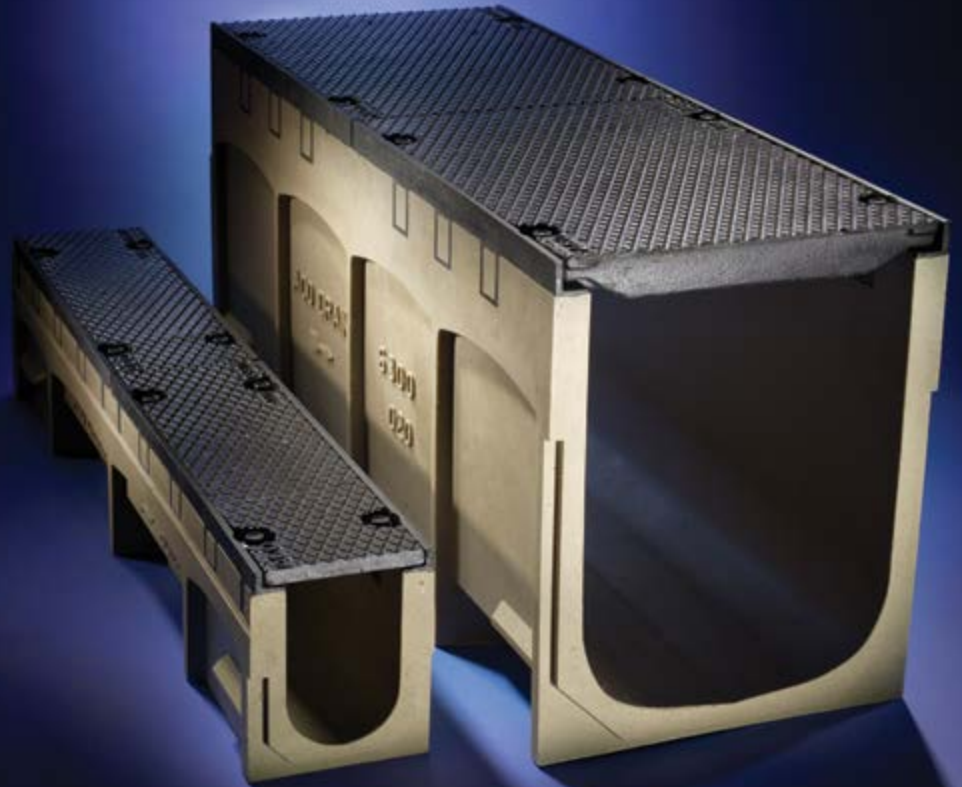


Utility Management
System



ACO UTILITYDUCT

Ducting System for Surface Level Utilities

Modular ducting channels with solid covers

GRUPO
COMERCIAL
COLIBRÍ
DE MONTERREY



The ACO Group

Established in 1946, the ACO Group has been a major manufacturer of products for the construction and building industry for almost 70 years.

The Group operates on a global basis and has companies in more than 40 countries with manufacturing on 4 continents.

ACO employs more than 3,800 people and has sales in excess of \$850 million.

ACO has been present in the USA since 1978 and has offices and manufacturing facilities nationwide.



ACO UtilityDuct

Developed from the industry leading modular surface drainage system ACO Drain, ACO Utility gives the same versatile 'plug and play' approach to surface ducting.

A surface ducting system is designed to protect cables, pipes etc. against external influences. The duct also acts as a shield to prevent its potentially hazardous contents from causing damage or injury to maintenance workers, passing pedestrians and nearby property.

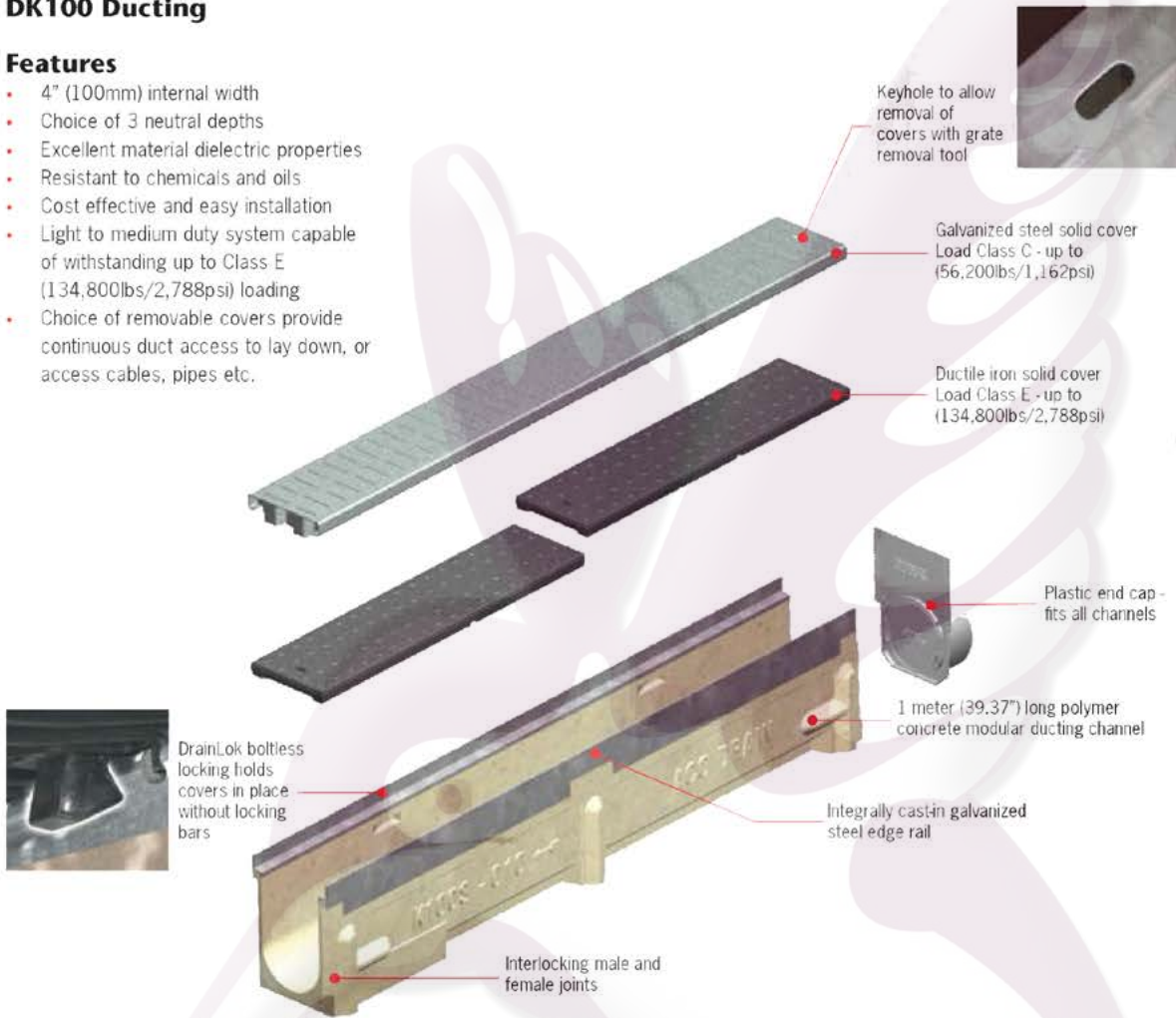
A duct allows continual access along a cable/pipe route via removable covers.

Polymer concrete is an ideal material for electrical ducts as it offers excellent insulation properties - electrical resistivity rating of $1 \times 10^8 \Omega/\text{sq}$.

DK100 Ducting

Features

- 4" (100mm) internal width
- Choice of 3 neutral depths
- Excellent material dielectric properties
- Resistant to chemicals and oils
- Cost effective and easy installation
- Light to medium duty system capable of withstanding up to Class E (134,800lbs/2,788psi) loading
- Choice of removable covers provide continuous duct access to lay down, or access cables, pipes etc.

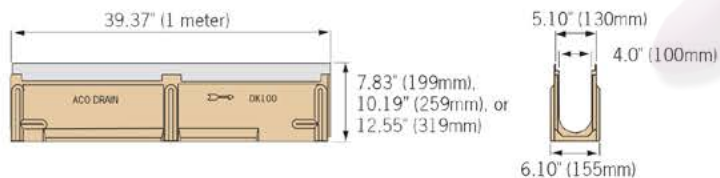


DK100 Ducting Parts List

Description	Part No.	Invert Depth inches (mm)	Length inches (mm)	Weight (lbs)
DK010 polymer concrete duct	99320	6.96 (177)	39.37 (1000)	36.8
DK020 polymer concrete duct	99321	9.33 (237)	39.37 (1000)	46.0
DK030 polymer concrete duct	99322	11.69 (297)	39.37 (1000)	55.8
DK100 End cap	96825	-	-	0.4
Cover Options				
Type 416 Galvanized steel solid cover	98947	-	39.37 (1000)	12.1
Type 456 Ductile iron solid cover	12672	-	19.69 (500)	9.9

Notes:

1. Units are sold as channel and covers separately - add weights for total unit weight.

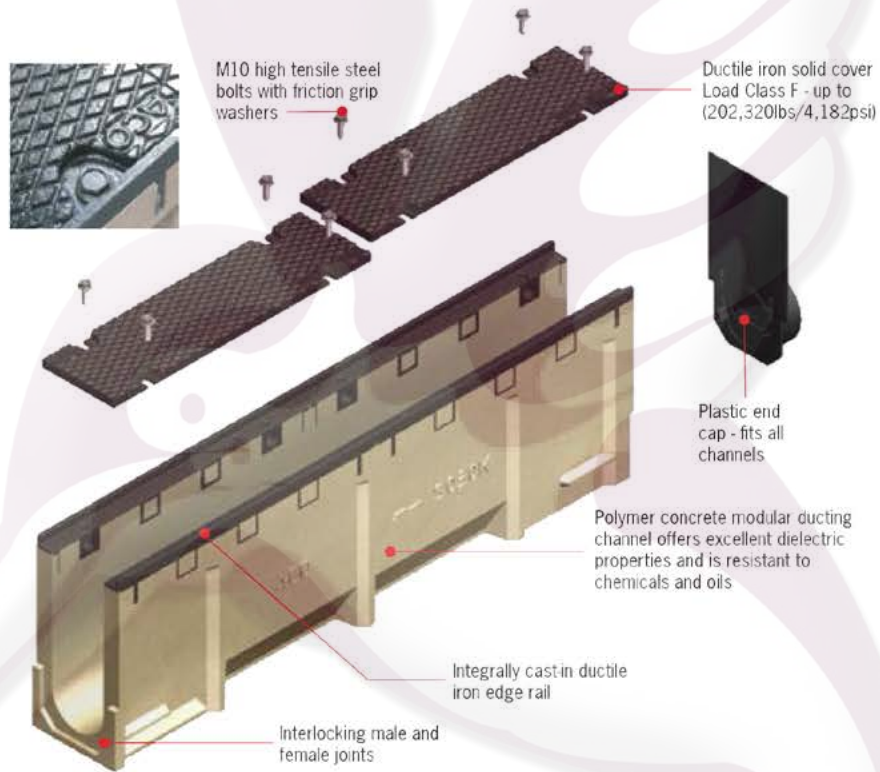




DS100 Ducting

Features

- 4" (100mm) internal width
- Choice of 3 neutral depths
- Excellent material dielectric properties
- Resistant to chemicals and oils
- Heavy duty system capable of withstanding up to Class F (202,320lbs/4,182psi) loading
- Continuous access when covers removed

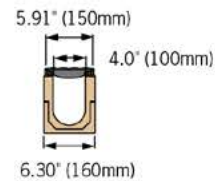
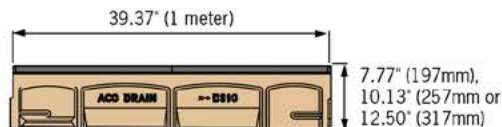


DS100 Ducting Parts List

Description	Part No.	Invert Depth inches (mm)	Length inches (mm)	Weight (lbs)	
				Total	Cover
DS010 duct with ductile iron covers	99266	6.77 (172)	39.37 (1000)	83.9	15.4
DS020 duct with ductile iron covers	99267	9.13 (232)	39.37 (1000)	99.9	15.4
DS030 duct with ductile iron covers	99268	11.50 (292)	39.37 (1000)	110.9	15.4
DS100 End cap	95063	-	-	-	0.4

Notes:

1. Units are sold complete (polymer concrete channel and 2 ductile iron covers) - total weight is complete unit.
2. Cover weights are provided as lifting weight information (individual covers only).

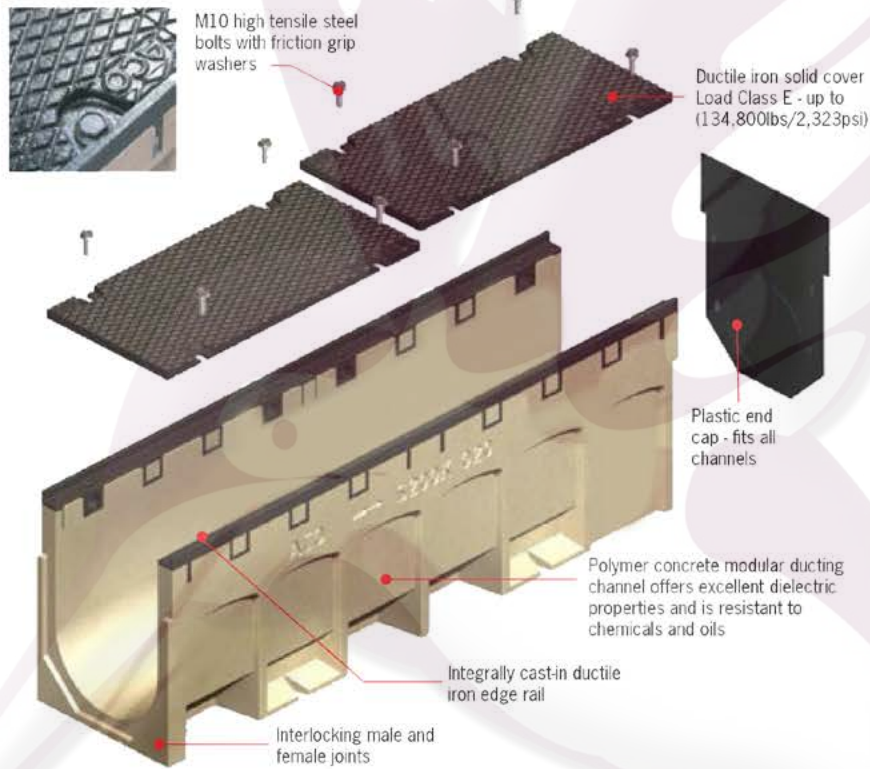




DS200 Ducting

Features

- 8" (200mm) internal width
- 1 neutral depth
- Excellent material dielectric properties
- Resistant to chemicals and oils
- Heavy duty system capable of withstanding up to Class E (134,800lbs/2,323psi) loading
- Continuous access when covers removed

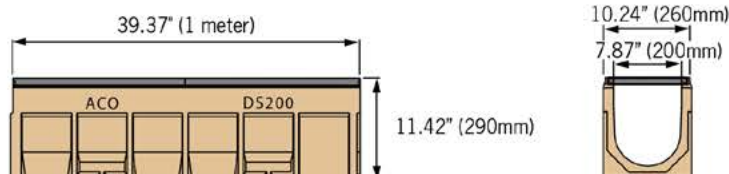


DS200 Ducting Parts List

Description	Part No.	Invert Depth inches (mm)	Length inches (mm)	Weight (lbs)	
				Total	Cover
DS2000 duct with ductile iron covers	76537	10.24 (260)	39.37 (1000)	180.0	33.0
DS200 End cap	99256	-	-	-	0.7

Notes:

1. Units are sold complete (polymer concrete channel and 2 ductile iron covers) - total weight is complete unit.
2. Cover weights are provided as lifting weight information (individual covers only).

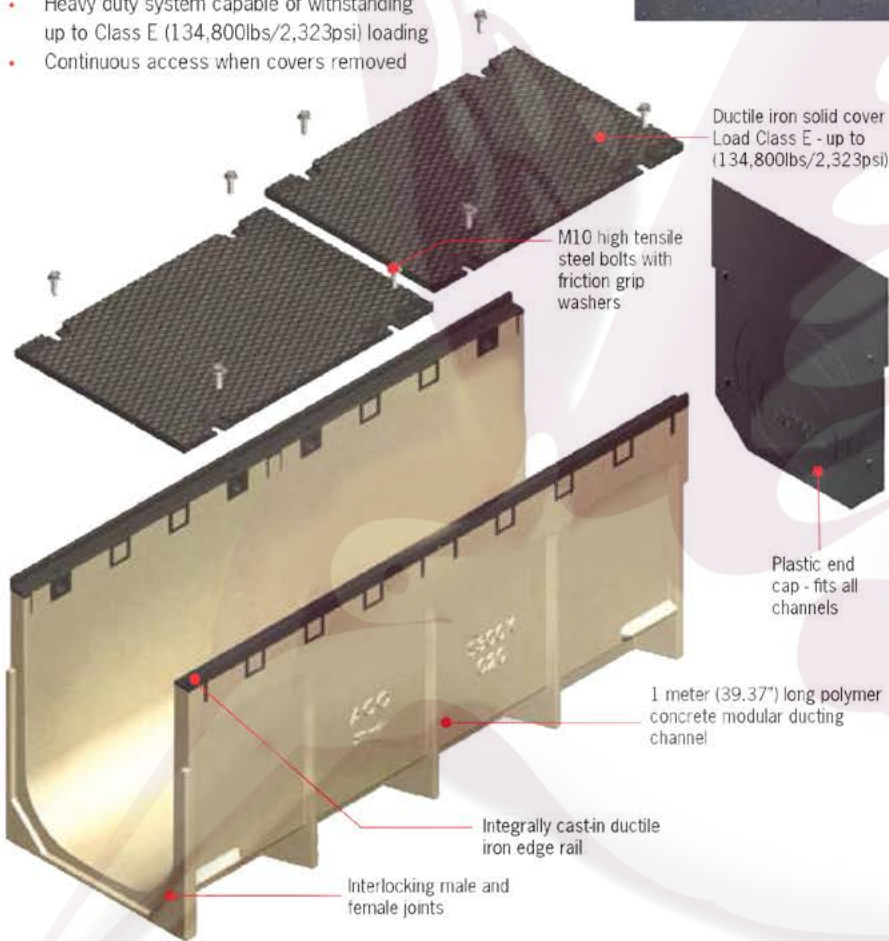




DS300 Ducting

Features

- 12" (300mm) internal width
- Choice of 4 neutral depths
- Excellent material dielectric properties
- Resistant to chemicals and oils
- Heavy duty system capable of withstanding up to Class E (134,800lbs/2,323psi) loading
- Continuous access when covers removed

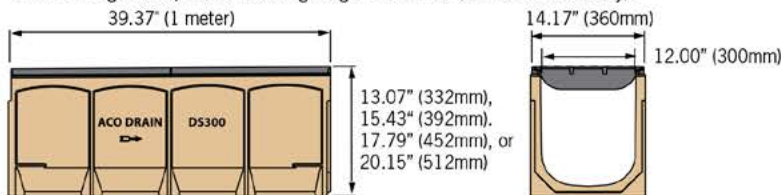


DS300 Ducting Parts List

Description	Part No.	Invert Depth inches (mm)	Length inches (mm)	Weight (lbs)	
				Total	Cover
DS300 01 duct with ductile iron covers	99258	11.89" (302)	39.37 (1000)	216.6	48.4
DS300 010 duct with ductile iron covers	99260	14.25" (362)	39.37 (1000)	229.6	48.4
DS300 020 duct with ductile iron covers	99261	16.61" (422)	39.37 (1000)	242.6	48.4
DS300 030 duct with ductile iron covers	99262	18.98" (482)	39.37 (1000)	254.6	48.4
DS300 End cap	99257	-	-	3.4	

Notes:

1. Units are sold complete (polymer concrete channel and 2 ductile iron covers) - total weight is complete unit.
2. Cover weights are provided as lifting weight information (individual covers only).





Other ACO product lines

- **ACO DRAIN**
World's leading modular trench drain system for commercial, industrial and landscape applications.
- **ACO SPORT**
A range of drainage and building accessories for track & field, used at Olympic sites since 1972.
- **ACO INFRASTRUCTURE**
Surface drainage for highways, urban roads and bridges.
- **ACO STORMBRIXX**
A unique, patented plastic geocellular stormwater management system.
- **ACO ENVIRONMENT**
Oil water separator and spill containment systems.
- **ACO WILDLIFE**
Tunnel and fence system designed to guide amphibians and other small creatures safely across roads.
- **ACO MARKANT**
Simple plastic and polymer concrete trench units for use around the home, garden and office.
- **QUARTZ BY ACO**
Stainless steel shower drains and accessories for tiled showers.



Tel.8375.0992/93, 8372.3713/14/15

Prol.Ruiz Cortines #307 Pte. Col.Paseo de Cumbres Mty N.L. C.P.64346

www.colibrimty.com



[colibrimty](https://www.facebook.com/colibrimty)