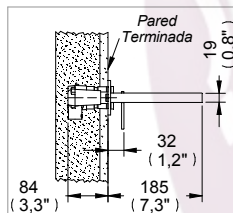
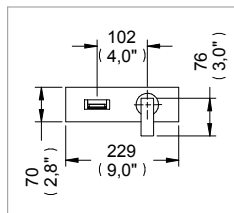


## Mezcladora para Lavabo / Lavatory Faucet

**E-3008**  
NC

### Monomando de Pared Acueducto con Desagüe de Push sin Rebosadero / Acueducto Wall Single Control with Push Drain Without Overflow



Medidas Referenciales / Estimated Dimensions, Acof.mm.(pulg) / Dim.mm.(in)

### Características y Datos Técnicos / Characteristics and Technical Details

Cartucho Monomando Cerámico  
Incluye Herramienta para Sujeción y Placa para Empotrar en Tablaroca  
Desagüe de Push sin Rebosadero

Ceramic Cartridge  
Setting Tools Included and Tablaroca Embed Plate  
Push Drain Without Overflow

**Ajuste de Instalación:**  
9,52 mm ( $\frac{3}{8}$ ") Max.

**Installation Adjustment:**  
9.52 mm ( $\frac{3}{8}$ ") Max.

**Conexión:**  
 $\frac{1}{2}$ "-14 NPT

**Inlet Thread:**  
 $\frac{1}{2}$ "-14 NPT

**Presión de Trabajo:**  
P<sub>min</sub>= 1,0 kg/cm<sup>2</sup> (14,22 PSI)  
P<sub>max</sub>= 6,0 kg/cm<sup>2</sup> (85,34 PSI)

**Working Pressure:**  
P<sub>min</sub>= 1,0 Kg/cm<sup>2</sup> (14,22 PSI)  
P<sub>max</sub>= 6,0 Kg/cm<sup>2</sup> (85,34 PSI)

**Gasto:**  
5 l/min (1,32gpm)

**Maximum Consumption:**  
5 l/min (1,32 gpm)

### Despiece / Components

| Mod.         | Descripción | Mod.  | Description |  |
|--------------|-------------|---|-------------|--|
| 1            | Rh-2052     | Tornillo Cabeza Hex. 10-24                    | 1 Rh-2052   | 10-24 Hexagonal Screw                      |
| 2            | Rh-1325     | Placa de Fijación                             | 2 Rh-1325   | Fixing Plate                               |
| 3            | Rv-740      | O'ring 2-028                                  | 3 Rv-740    | 2-028 O'ring                               |
| 4            | Rh-253      | O'ring 2-011                                  | 4 Rh-253    | O'ring 2-011                               |
| 5            | Sh-1045     | Cartucho Monomando                            | 5 Sh-1045   | Single Control Cartridge                   |
| 6            | Rh-2019     | Tuerca p/Fijación de Porta Cartucho           | 6 Rh-2019   | Cartridge Port Fixing Nut                  |
| 7            | Rh-2438     | Empaque Chapeton Monom                        | 7 Rh-2438   | Packink Control                            |
| 8            | Rh-2006     | Tuerca de Fijación de Chapeton                | 8 Rh-2006   | Fixing Nut Plate                           |
| 9            | Rh-2021     | Rondana Antifricción                          | 9 Rh-2021   | Antifriction Washer                        |
| 10           | Rh-2020     | Empaque Amortiguador                          | 10 Rh-2020  | Shock Absorber Gasket                      |
| 11           | Rh-2009     | Tapa Deslizante Monom. de Lavabo              | 11 Rh-2009  | Slider Cap                                 |
| 12           | Rh-2008     | Maneral Monom. de Lavabo Vértika              | 12 Rh-2008  | Vértika Single Control Handle              |
| 13           | Rv-225      | Opresor Allen 8-32 UNC X 0,19"                | 13 Rv-225   | 8-32 UNC X 0,19" Allen Setscrew            |
| 14           | Rh-2439     | Protector de Piston                           | 14 Rh-2439  | Piston Protector                           |
| 15           | Rh-2419     | Esparrago de Ajuste                           | 15 Rh-2419  | adjusting stud                             |
| 16           | Rh-2421     | Conector                                      | 16 Rh-2421  | Connector                                  |
| 17           | Rh-2036     | Tomillo de Ajuste                             | 17 Rh-2036  | Fitting Screw                              |
| 18           | Sv-454      | Economizador 2 l/min                          | 18 Sv-454   | Economizer                                 |
| 19           | Rh-1334     | O'ring 2-019                                  | 19 Rh-1334  | O'ring 2-019                               |
| 20           | Rh-634      | O'ring 2-009                                  | 20 Rh-634   | O'ring 2-009                               |
| 21           | Rh-2017     | Tomillo Sujetador                             | 21 Rh-2017  | Screw Anchor                               |
| 22           | Rh-1866     | Tapa Ancha                                    | 22 Rh-1866  | wide Cover                                 |
| 23           | Rh-2207     | Empaque Tapa Acueducto                        | 23 Rh-2207  | Acueducto Cover Gasket                     |
| 24           | Rh-2208     | Filtro p/Salida Acueducto a Pared             | 24 Rh-2208  | Filter for Acueducto Wall Faucet           |
| 25           | Rh-1068     | Protector Cap                                 | 25 Rh-1068  | Protective Cap                             |
| 26           | Rh-1943     | Cúpula p/Contra Desagüe Lav. Push             | 26 Rh-1943  | Push Drain Cover                           |
| 27           | Rh-1946     | Empaque para Contra Push                      | 27 Rh-1946  | Push Drain Gasket                          |
| 28           | Rh-1945     | Extensión Superior Contra Push                | 28 Rh-1945  | Top Push Drain Extension                   |
| 29           | Sh-1034     | Dispositivo Push                              | 29 Sh-1034  | Device Push                                |
| 30           | Rh-1944     | Rejilla para Contra                           | 30 Rh-1944  | Trashrack                                  |
| 31           | Rh-1914     | Cuerpo Contra s/Rebosadero                    | 31 Rh-1914  | Drain Body without overflow                |
| 32           | Rh-090      | Empaque Cónico Contra Lavabo                  | 32 Rh-090   | Conical Lavatory Package                   |
| 33           | Rh-089      | Rondana Contra Lavabo                         | 33 Rh-089   | Lavatory Drain Washer                      |
| 34           | Rh-088      | Tuerca Contra Lavabo                          | 34 Rh-088   | Lavatory Drain Nut                         |
| 35           | Rh-930      | Tubo Unión Césped Contra                      | 35 Rh-930   | Lavatory Drain Joint Pipe                  |
| 36           | Rh-2023     | Llave p/Tcas. Monomando Lavabo                | 36 Rh-2023  | Wrench for Single Control Nut              |
| 37           | Rv-742      | Llave Allen 2 mm                              | 37 Rv-742   | 2 mm Hex Wrench                            |
| Sub-ensamble |             |   |             |  |
| 38           | Sh-1168     | Porta Cartucho Arm. p/Monom. de Pared Vértika | 38 Sh-1168  | Assembly Cartridge Port For Single Control |
| 39           | Sh-1187     | Chapeton Arm. p/Monomando de Lavabo           | 39 Sh-1187  | Chapeton for armed lever basin             |
| 40           | Sh-1069     | Maneral p/Monomando de Lavabo                 | 40 Sh-1069  | Single Control Handle                      |
| 41           | Th-065      | Contra Push p/Lavabo s/Reb.                   | 41 Th-065   | Push Drains for Lavatory Without Overflow  |
| 42           | Sh-1164     | Kit Mantenimiento para Usuario Final          | 42 Sh-1164  | Maintenance Kit for end-user               |

\* Los productos ilustrados pueden sufrir cambios sin previo aviso en su aspecto o partes, como resultado de los procesos de mejora continua al que están sujetos, sin implicar mayor responsabilidad de la fábrica.

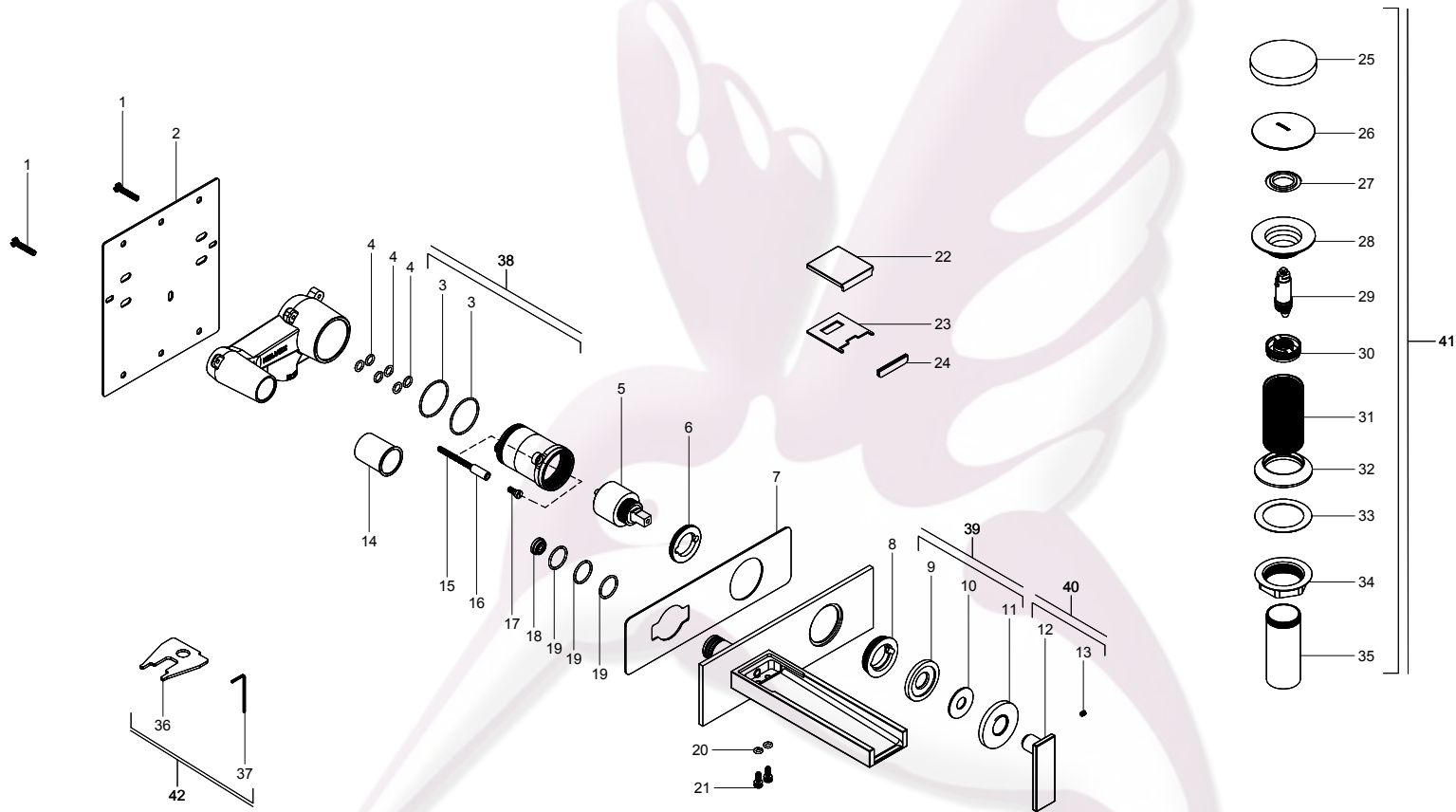
\* Products depicted here in subject to change without prior notice in their appearance or components as a result of incremental innovation.



**Mezcladora para Lavabo / Lavatory Faucet**

**E-3008**

NC



**HELVEX**  
garantía de calidad

